

Kemet

BRUSH BACKED SANDERHEAD



KEMET

SANDERHEAD

CONTOUR SURFACE FINISHING AT ITS BEST

Most hand sanding operations can now be eliminated.

The Sanderhead explained:

Flexible fibre brushes force cloth-backed abrasive strips to follow every contour to achieve a uniformly superior standard of finish. These abrasive strips can be supplied in solid form for sanding flat surfaces or split or slashed form for sanding contoured surfaces. The abrasive strips are stored neatly in the core of the Sanderhead so that worn ends can be quickly replenished with new material.

Sanderheads are available in three sizes with various cutting widths of abrasive. The 8P models are normally driven by a bench or floor type spindle stand whilst the lightweight 6P1 and 6P2 models can be used with hand held portable and flexible power tools. The Sanderhead is constructed as a quality product and all parts which are subject to abrasive wear can easily be replaced.



Model 6P1 used on rubber golf club handle.



Model 8P4 used on wood moulding.

KEMET

SANDERHEAD

BRUSH-BACKED SANDERHEAD AND SANDERHEAD APPLICATIONS

BRUSH-BACKED SANDERHEADS					
Type	Diameter	Details	Complete Head	Spare Brushes	Brush Holders
			Code	Code	Code
6P1	150mm (6")	Brush width: 40mm Brushes per set: 12 Net weight: 1.2 kgs	510002	530001	520001
6P2	150mm (6")	Brush width: 70mm Brushes per set: 12 Width: 92mm Net weight: 1.38 kgs	510003	530002	520002
8P2	200mm (8")	Brush width: 70mm Brushes per set: 20 Width: 92mm Bore: 25mm Net weight: 2.5 kgs	510027	530002	520002
8P4	200mm (8")	Brush width: 120mm Brushes per set: 20 Width: 143mm Bore: 25mm Net weight: 3.4 kgs	510018	530003	520003

Sanderheads are complete but without abrasive loadings.

Wood

- ◆ Furniture ◆ Car Trim ◆ Toys
- ◆ Picture Frames ◆ Toys & Models
- ◆ Building Materials ◆ Ladders
- ◆ Orthopaedic Shoes
- ◆ Sports Equipment, etc.

Metal

- ◆ Display Stands ◆ Stainless Steel Vessels ◆ Aircraft Fuselages
- ◆ Alloy Masts & Spars
- ◆ Golf Club Heads
- ◆ Stainless Steel Barrels
- ◆ Aluminium Window Frames
- ◆ Cast Gutters, etc.

Rubber

- ◆ Golf Club Grips ◆ Rubber Mats
- ◆ Tyres ◆ Handles & Roughing of surfaces for adhesive applications, etc.

Plastic

- ◆ Spectacle Frames
- ◆ Fibre Glass Products
- ◆ Musical Instruments & Dress Models
- ◆ Plastic Welds ◆ Plastic Gutters, etc.

KEMET

SANDERHEAD

ABRASIVE LOADINGS

A wide range of solid and slashed abrasive loadings are available to suit the Sanderhead. The choice depends on the contour and material to be sanded. For flat surfaces use solid loadings. For contoured surfaces, slashed loadings should be used.



SANDERHEAD ABRASIVE LOADINGS				
Grit	6P1	6P2	8P2	8P4
	Code	Code	Code	Code
Slashed				
60	560001	560006	560006	560011
80	560002	560007	560007	560012
120	560003	560008	560008	560013
180	560004	560009	560009	560014
320	560005	560010	560010	560015
No req. per head	3	3	5	5
Solid				
60	560025	560098	560098	560105
80	560095	560028	560028	560030
120	560026	560029	560029	560031
180	560051	560053	560053	560032
320	560027	560103	560103	560108
No req. per head	3	3	5	5

Recommended Abrasive

A range of Aluminium Oxide loadings is available ex stock. There are however occasions when special abrasives are needed, for example some metals require Silicon Carbide loadings, it may also be necessary to use a loading with a special cloth backing, this could be for light or heavy duty work. The Technical Support Department of Kemet is always available to recommend the correct Sanderhead and loadings type for a given application. A comprehensive spares list is available upon request.

Loops are coded singly. Please quote Sanderhead No. when ordering.

KEMET

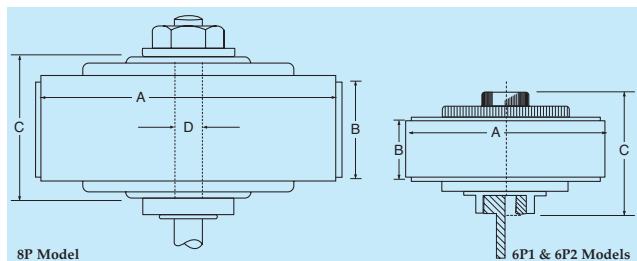
SANDERHEAD

SPECIFICATION

SANDERHEAD TYPES								
Sanderhead Type	Diameter A mm	Cutting Width B mm	Overall Width C mm	Bore D mm	Recommended Operating Speeds			Maximum Operating Speeds
					Wood r.p.m.	Plastics r.p.m.	Metal r.p.m.	
6P1	150	38	89	See below	1400	1400	2800	2800
6P2	150	50	92	See below	1400	1400	2800	2800
8P2	200	50	92	See below	1400	1400	2800	2800
8P4	200	100	143	See below	1400	1400	1800	1800

SANDERHEAD MOUNTING OPTIONS

	Mounting	Bush Options	Stub Shaft Options
6P1	Universal	3/8", 1/2", 5/8", 3/4"	3/8" (9mm) 1/2"(12mm)
6P2		BSF or BSW M14-12 or 32mm long	
8P2	25mm (1")	20mm or 3/4"	On Request
8P4	Standard Bore		

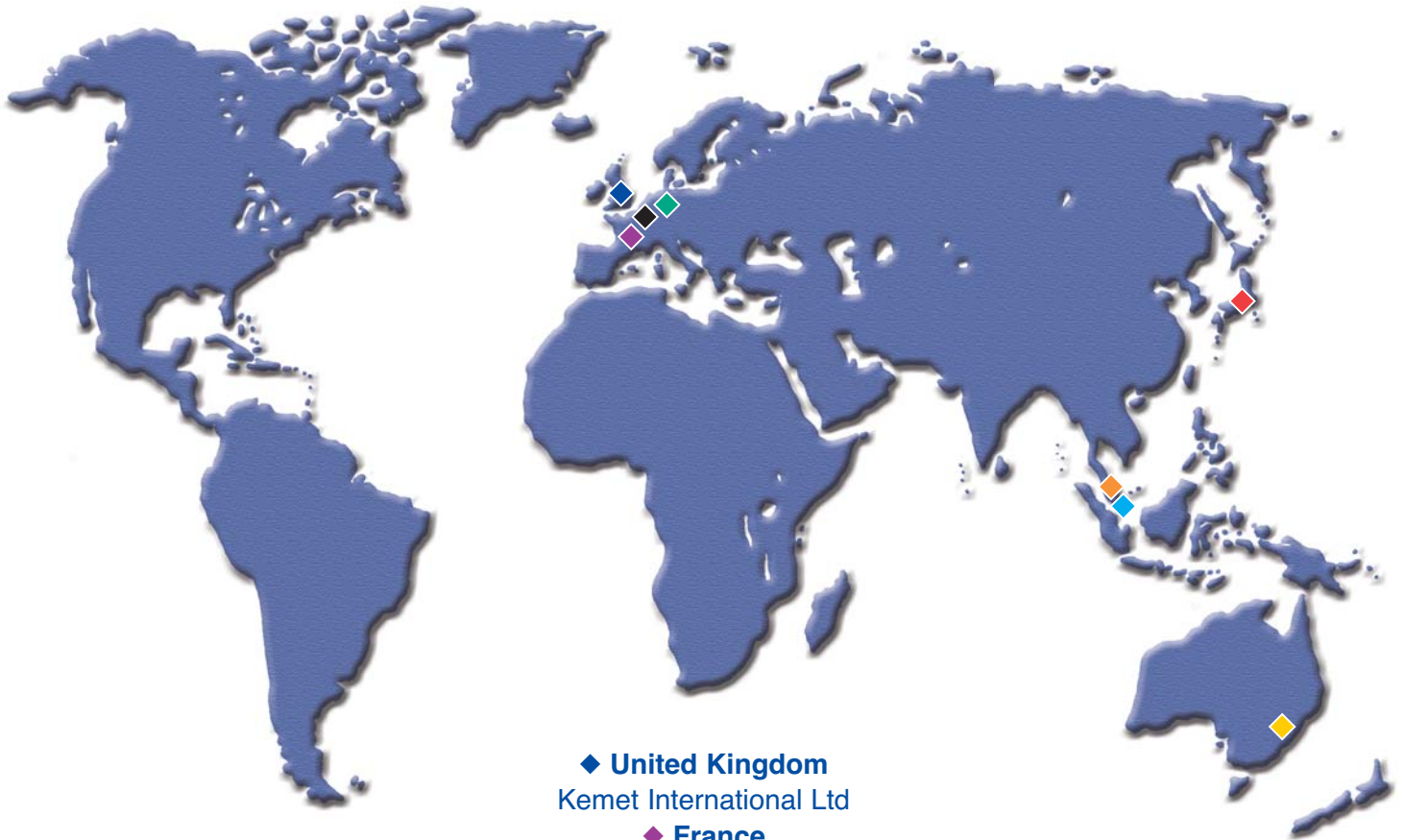


Imperial / Metric conversions are approximate.

Kemet

the world over

Kemet International Ltd and Subsidiary Companies



◆ **Netherlands**
Kemet Europe B.V.
◆ **Benelux**
Kemet Europe B.V.B.A.

◆ **United Kingdom**
Kemet International Ltd
◆ **France**
Kemet Europe S.A.R.L.
◆ **Singapore**
Kemet Far East Pte Ltd
◆ **Malaysia**
Kemet Precision (M) SDN BHD

◆ **Japan**
Kemet Japan Co Ltd
◆ **Australia**
Kemet Australia Pty Ltd

**Kemet Products are available through a Worldwide
Network of Authorised Distributors in**

**U.S.A.
Middle East**

**Europe
Africa**

**Asia
Australasia**

Kemet

KEMET INTERNATIONAL LTD

Cuxton Road, Parkwood Trading Estate
Maidstone, Kent ME15 9NJ, United Kingdom.

Tel: +44 (0) 1622 755287 Fax: +44 (0) 1622 670915
E-mail: sales@kemet.co.uk Website: www.kemet.co.uk